

Oxford Fails Regional Crown Reserve (R1012168)

Management Strategy

Prepared by: John Filocamo
Department of Lands
Date: 21 August 2006

Contents

Introduction..... 3

Background 3

Land included..... 4

Land values 4

Legislative and policy framework..... 4

Land management outcomes..... 5

Native title..... 7

Attachment 1 Map of Regional Crown Reserve 7

Attachment 2 Land included in Regional Crown Reserve..... 7

Attachment 3 Objects and Principles of Crown Land Management..... 8

Introduction

This management strategy describes the broad management parameters under which Oxford Falls Regional Crown Reserve R1 01 2168 (the reserve) is to be managed, and forms the basis of a future plan of management to be developed through a public consultation process. The reserve is to be managed for the public purpose of *access and public requirements; tourism purposes; and environmental and heritage conservation.*

It is intended that approximately 75% of the land area which has inherent high natural, ecological and cultural values, is to be managed primarily by way of environmental protection.

A plan of management under the *Crown Lands Act 1989* will determine the management strategies to be used to implement the public purpose of the reserve. Plans of management consolidate information about the reserve and its users, and clearly state what, why, how and by whom the values of the reserve will be managed.

Background

The Oxford Falls area is valued for its natural bushland and the habitat this provides for wildlife conservation. Parts of the Oxford Falls area also include cultural sites amidst numerous lookouts and scenic areas (eg Oxford Falls). The area is popular with cyclists and walkers and provides ready access Sydney's northern beaches between Narrabeen and Manly, the Narrabeen lagoon as well as the adjoining Garigal National Park. The area may also afford potential sites to accommodate well-integrated, either low key or intensive development.

The majority of attractions within the Oxford Falls area are on Crown land that is either administered by the Department of Lands or under the control and management of Warringah Council.

Notwithstanding the nature of this region, up to the present there has been no coordinated Crown land management strategy to deliver outcomes that will contribute to the social and economic benefit of the region.

The existing varied and fragmented management regimes cannot deliver outcomes that will primarily benefit the Oxford Falls area because the current array of reserves was notified on a piecemeal basis for diverse public purposes.

Regional Crown Reserves enable better coordination and planning; greater public awareness of Crown land (through signage etc); better movement of funds (income) across reserves; and are consistent with the Minister's approval of 21 December 2005 to establish regional reserves particularly where there is a need for the Department to demonstrate a commitment to providing appropriate stewardship of Crown lands under its control.

The Oxford Falls Regional Crown Reserve enables the Department to work with existing managers in the region to obtain better outcomes for the regional community. Pending any establishment of a future management regime to deliver the desired co-ordinated outcomes, existing reserves, managers and tenures remain in place.

Unless a trust is appointed, management of a Regional Crown Reserve devolves to the Minister for Lands and is therefore managed under delegation by officers of the Department of Lands.

Land included

This management strategy applies to all land included in the reserve RI 01 2168 as shown on the cadastral map attached at Diagram 'A' and included in the attached Schedule of Land 'A'.

In summary form, the reserve can be described as being mainly in the Oxford Falls valley in the Warringah Local Government Area. The reserve includes lands at Belrose, Oxford Falls, Beacon Hill and Cromer within stream catchments which feed into Deep Creek, Middle Creek and South Creek. The area is generally bounded by Forest Way on the west, Warringah Road on the south, South Creek on the east and Garigal National Park on the north.

These lands include:

- Reserve 100221 and other reserves notified for public recreation and urban services;
- Several reserves notified for public recreation, community or related purposes for which Warringah Council is Trust manager;
- Some reserves for water or in combination with other purposes for access;
- Several reserves previously notified for future public requirements;
- Pt Reserve 101 1448 for future public requirements;
- Several reserves subject to permissive occupancies or licences.

Land values

The reservation of the land enables social, environmental and economic outcomes important in the public interest.

It is the Department's intention that various values of the wider community are realised for the Oxford Falls Regional Crown Reserve (RI 01 2168), either overall or through management of discrete land components. Such values include:

- Natural values of the area's indigenous vegetation which provides valuable habitat for plants and animals. The Reserve area includes significant threatened flora, fauna and ecological communities, as listed under the NSW Threatened Species Conservation Act.
- Ecological values in protecting catchments, ensuring the effectiveness of restoration works in Middle Creek which is a tributary of Narrabeen Lagoon, hence contributing to the overall health of this ecosystem.
- Aboriginal cultural values with several Aboriginal heritage sites located within in the Reserve area and Cromer Heights has been listed on the Register of the National Estate. Also, some Aboriginal Land Claims within the Reserve area will need to be resolved.
- Cultural heritage values of the period of European settlement are embodied in the former Oxford Falls Public School Building, currently used as a community centre.
- Recreational values where in-demand regional recreation facilities can be accommodated (eg possible specialist circuit areas for mountain bikes) linked with a network of multiple use trails proposed by Warringah Council.
- Quality tourism and ecotourism experiences afforded by trails and natural features within the Regional Reserve which are able to be linked to the nearby National Park.
- The ability to accommodate urban facilities and development on suitable sites, in ways that are complementary to local and regional communities, both socially and functionally.
- The ability to initiate suitable development projects, with the support of Council, should a community need be demonstrated.

The Oxford Falls Regional Crown Reserve (R1012168) includes many parcels of land considered to afford high natural, ecological and cultural values and these are listed to be managed by way of environmental protection on the attached land schedule.

Legislative and policy framework

The reserve will be managed according to the objects and principles of Crown land management attached at 3 and in accordance with Crown land legislation and policies. Relevant policies are found on the website www.lands.nsw.gov.au.

Management of the reserve will be consistent with State and Commonwealth legislation, plans and relevant Government policies, such as the following:

Environmental Planning and Assessment Act, 1979 Heritage Act 1977

National Parks and Wildlife Act 1974

State environmental planning policies (SEPPS)

Fisheries Management Act, 1994

Aquatic Habitat Management and Fish Conservation 1999

Threatened Species Conservation Act 1995

Native Vegetation Act 2003

NSW Biodiversity Strategy

Protection of the Environment Operations Act 1997

National Strategy for Ecologically Sustainable Development (ESD)

NSW Coastal Policy

State Rivers and Estuary Policy

NSW Wetlands Management Policy 1996 NSW Total Asset Management Policy

Local Government plans and policies such as Local Environment Plans will also be adhered to in the management of the land.

Land management outcomes

The desired outcomes of the reserve management are:

Environmental protection of some 75% of the lands in the reserve

Well-integrated, either low key or intensive development in other areas of the reserve if appropriate

Management in the public interest

Management in the regional context

A reserve framework that provides broad-scale benefits to the region, while also serving local communities.

Visitor management and facilities

Public use and enjoyment of the reserve is consistent with the purpose. The provision and enhancement of a diversity of multi-use recreational public open space opportunities will be balanced with the need for environmental protection of particular areas of the reserve.

In appropriate areas of the reserve provision will be made for the improvement of public access to the reserve and enhancement of public facilities. This may include the provision of pedestrian pathways, access roads and car parks to improve access and minimise movements on reserve land.

In addition, facilities such as walking trails, interpretative and directional signage, viewing platforms, seating and picnic tables, toilet facilities and food and beverage outlets will be developed where required and where appropriate.

Tourist facilities will be identified and developed where required and appropriate.

Environmental Management

Areas of the reserve conserved for their environmental values (built, cultural and natural) will be protected.

The environmental management will include the management of bushfire, weeds, feral animals, threatened species, heritage structures, aboriginal cultural items, erosion control, drainage & flooding, vegetation and landscaping, waste control, noise and lighting.

Management of the reserve will be consistent with any applicable catchment action plan adopted by a Catchment Management Authority.

Commercial management

Income producing avenues for the reserve will be explored to ensure the sustainable management of the reserve.

In determining the size and scale of facilities in the reserve, consideration will be given to:

- * the size and scale of the development in relation to the size of the reserve;
- * the relationship of the proposal to development on adjoining land or on other land in the locality;
- * landscaping provisions which ensure the preservation of trees and other vegetation in order to enhance the visual experience and amenity values of the reserve;
- * provision of adequate infrastructure, water, electricity and sewerage;
- * the social and economic effect of the proposal on the reserve and the locality;
- * the character, siting, scale, shape, size, height, design and external appearance of the proposal;
- * provisions for the protection and maintenance of any heritage buildings, archaeological, indigenous cultural values or sites or threatened species critical habitat;
- * the need for minimal signage located on the site of the activity or facility and no product advertising;
- * the amount of traffic, parking, loading unloading and manoeuvring likely to be generated by the proposal and how it can be provided without compromising other users of the reserve
- * impact on native title.

Risk Management

The reserve manager or the manager of a sub reserve will undertake a risk assessment to determine what the management risks are and how they will be managed.

Native title

The introduction of the Commonwealth Native Title legislation in 1993 recognised the existence of native title and made provision for Aboriginal and Torres Strait Islanders to lodge claims over Crown land. The legislation also sets out the requirements for the Crown and appointed Crown reserve trusts in dealing with Crown land in the future unless it can be clearly established that any native title rights and interests that may have existed have been extinguished.

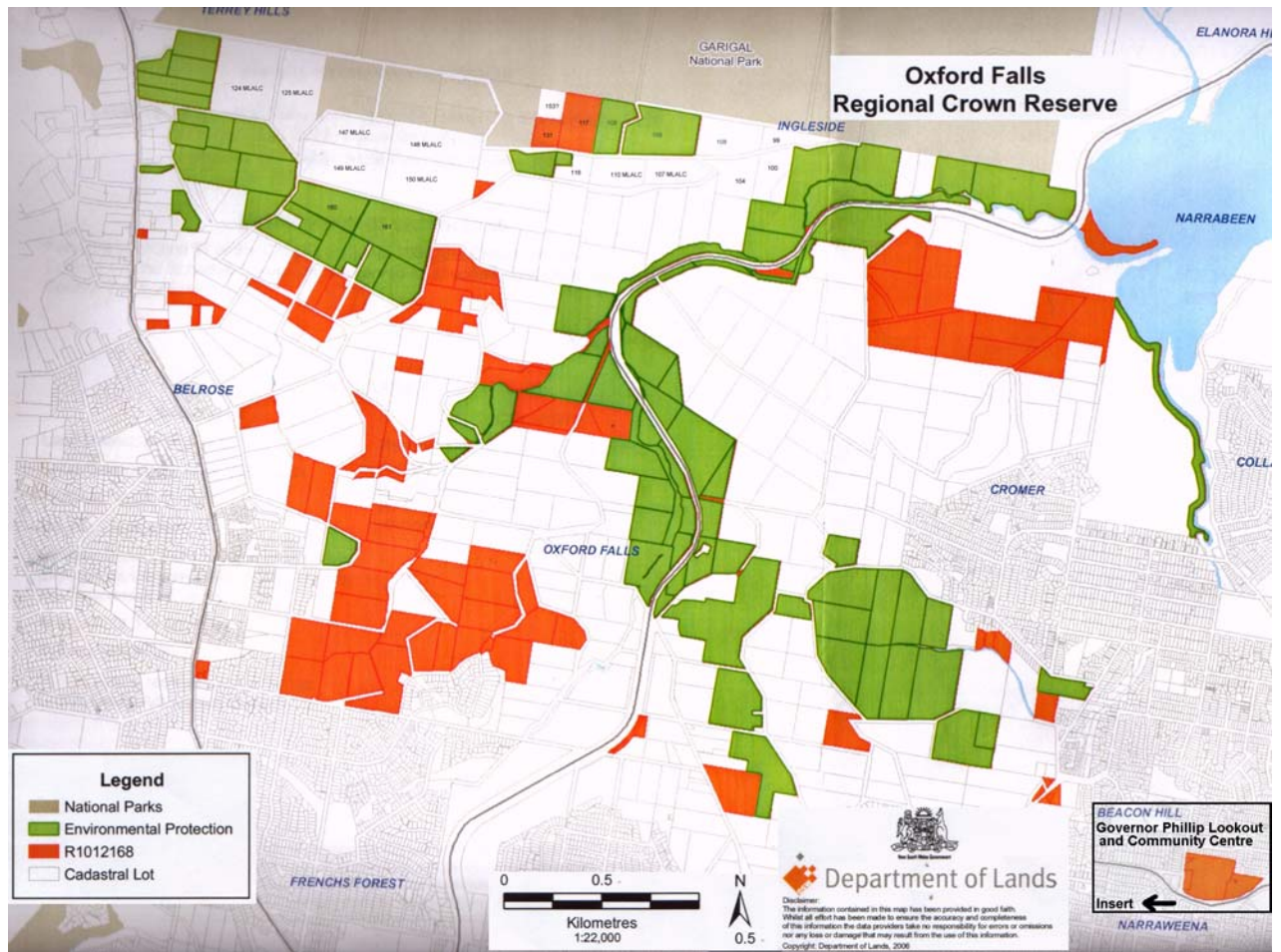
Native title may have been extinguished over parts or the whole of this Crown reserve by the construction of authorised public works or by lawful use of the land that is wholly inconsistent with the continuation of native title rights and interests. It will be the responsibility of the reserve managers to ensure that, prior to any works being undertaken the issue of native title is addressed.

Attachment 1: Map of Regional Crown Reserve R1012168

Attachment 2: Land included in Regional Crown Reserve R1012168

Attachment 3: Objects and Principles of Crown Land Management

Map of Crown Reserve



SCHEDULE A - LAND INCLUDED IN OXFORD FALLS REGIONAL CROWN RESERVE

Lot number	planno 1	preferred land use	description of land
192	752038	further investigation	
2517	752038	further investigation	
867	752038	further investigation	
1045	752038	environmental protection	
7061	93798	environmental protection	
7170	1075990	environmental protection	
<u>7175</u>	9379U	<u>environmental protection</u>	
<u>1034</u>	752038	<u>environmental protection</u>	
<u>7059</u>	1075131	<u>environmental protection</u>	
<u>1043</u>	752038	<u>environmental protection</u>	
<u>7062</u>	93798	<u>environmental protection</u>	
<u>1037</u>	752038	<u>environmental protection</u>	
<u>7174</u>	1071219	<u>environmental protection</u>	
<u>10821</u>	752038	<u>environmental protection</u>	
<u>1044</u>	752038	<u>environmental protection</u>	
<u>7172</u>	93813	<u>environmental protection</u>	
<u>7060</u>	1058878	<u>environmental protection</u>	
<u>1051</u>	752038	<u>environmental protection</u>	
<u>1036</u>	752038	<u>environmental protection</u>	
<u>7173</u>	93813	<u>further investigation</u>	
<u>7168</u>	1060737	<u>environmental protection</u>	
<u>7034</u>	93795	<u>further investigation</u>	
<u>10841</u>	752038	<u>environmental protection</u>	
<u>868</u>	752038	<u>community</u>	
<u>1062</u>	752038	<u>further investigation</u>	
<u>181</u>	752038	<u>further investigation</u>	
<u>889</u>	752038	<u>environmental protection</u>	
<u>890</u>	752038	<u>environmental protection</u>	
<u>888</u>	752038	<u>environmental protection</u>	
<u>2627</u>	752038	<u>environmental protection</u>	
<u>186</u>	752038	<u>environmental protection</u>	
<u>201</u>	752038	<u>further investigation</u>	
<u>201</u>	752038	<u>further investigation</u>	
<u>201</u>	752038	<u>further investigation</u>	
<u>971</u>	752038	<u>community</u>	
<u>971-</u>	752038	<u>community</u>	
<u>971</u>	752038	<u>community</u>	
<u>7030</u>	93767	<u>further investigation</u>	
<u>1</u>	853151	<u>community</u>	
2867	853153	community	
2869	824056	community	
120	752038	environmental protection	
121	752038	environmental protection	
6	700298	<u>environmental protection</u>	
4	807906	<u>further investigation</u>	
7033	93766	further investigation	
162	752038	environmental protection	
102	752038	environmental protection	
195	752038	further investigation	
<u>95</u>	752038	<u>'environmental protection</u>	
<u>1028</u>	752038	<u>environmental protection</u>	
<u>1026</u>	752038	<u>environmental protection</u>	
<u>1016</u>	752038	<u>environmental protection</u>	
<u>9041</u>	752038	<u>environmental protection</u>	

1032 752038 environmental protection

1017 752038 environmental protection
1030 752038 further investigation
1026 752038 environmental protection
1022 752038 environmental protection
1021 752038 environmental protection
10231 752038 environmental protection
1029 752038 environmental protection
102 752038 environmental protection
97 752038 environmental protection
198 752038 environmental protection
1028 752038 environmental protection
1027 752038 environmental protection
98 752038 environmental protection
101 752038 environmental protection
1015 752038 further investigation
1132 752038 environmental protection
7036 93795 environmental protection
2639 752038 further investigation
1088 752038 environmental protection
1047 752038 environmental protection
825 752038 environmental protection
1064 752038 further investigation
990 752038 further investigation
1053 752038 environmental protection
2 808682 further investigation
1055 752038 environmental protection
856 752038 environmental protection
957 752038 further investigation
1334 752038 further investigation
1008 752038 further investigation
986 752038 further investigation
1046 752038 environmental protection
1054 752038 environmental protection
1086 752038 environmental protection
1089 752038 environmental protection
1009 752038 further investigation
824 752038 environmental protection
8261 752038 environmental protection
2012 752038 environmental protection
2510 752038 environmental protection
985 752038 further investigation
1005 752038 further investigation
998 752038 further investigation
987 752038 further investigation
1063 752038 further investigation
991 752038 further investigation
1006 752038 further investigation
827 752038 environmental protection
89 752038 further investigation
992 752038 further investigation
819 752038 environmental protection
956 752038 further investigation
988 752038 further investigation
830 752038 environmental protection
978 752038 further investigation

983 752038 further investigation

828 752038 environmental protection

818 752038 environmental protection
816 752038 environmental protection
989 752038 Further investigation
2458 752038 further investigation
171 752038 further investigation
174 752038 further investigation
2 550326 further investigation
161 752038 environmental protection
164 752038 environmental protection
160 752038 environmental protection
166 752038 environmental protection
163 752038 environmental protection
167 752038 environmental protection
165 752038 environmental protection
2848 821661 community + environmental protection
884 752038 community + environmental protection
885 752038 community + environmental protection
864 752038 community + environmental protection
2847 821660 community + environmental protection
883 752038 community + environmental protection
881 752038-community + environmental protection
870 752038 community + environmental protection
829 752038 environmental protection
17 729342 community
19 729342 community
18 729342 community
15 729342 community
16 729342 community
964 752038 environmental protection
880 752038 environmental protection + community
882 752038 environmental protection + community
869 752038 community
953 752038 further investigation
2630 752038 further investigation
7141 752038 environmental protection
2600 752038 further investigation
1498 752038 environmental protection
7035 93795 environmental protection
183 752038 further investigation
2636 752038 further investigation
2 853151 community
173 752038 further investigation
1004 752038 further investigation
7029 1030769 environmental protection
2640 752038 further investigation
7031 93767 further investigation
109 752038 environmental protection + community
117 752038 environmental protection + community
131 752038 environmental protection + community
153 752038 environmental protection + community
2651 752038.environmental protection + community
2857 48272 environmental protection + community
2858 48272 environmental protection + community
939 752038 further investigation

97 869624 further investigation
96 869624 further investigation

<u>90</u>	869624	<u>further investigation</u>
<u>95</u>	869624	<u>further investigation</u>
<u>2406</u>	752038	<u>further investigation</u>
<u>2407</u>	752038	<u>further investigation</u>
<u>1927</u>	752038	<u>further investigation</u>
5	729342	<u>further investigation</u>
7189	1075991	environmental protection
7190	1075991	environmental protection
7171	1069776	environmental protection
142	752038	environmental protection
1987	752038	environmental protection
1930	752038	environmental protection
144	752038	environmental protection
146	752038	environmental protection
2582	752038	environmental protection
143	752038	environmental protection
141	752038	environmental protection
remainder 2	752038	environmental protection
122	752038	environmental protection
		environmental protection
153	752038	environmental protection + community
2857	48272	environmental protection + community
117	752038	environmental protection + community
2858	48272	environmental protection + community
109	752038	environmental protection + community
part 102	752038	environmental protection
part 102	752038	environmental protection
895	752038	environmental protection
896	752038	environmental protection
part 186	752038	environmental protection
180	752038	further investigation
179	752038	further investigation
152	752038	further investigation
part 195	752038	further investigation
		further investigation
part 1015	752038	further investigation
part 1030	752038	further investigation
part 1032	752038	environmental protection
		environmental protection
1682	752038	environmental protection
7095	1069200	environmental protection
7093	1069199	environmental protection
7094.	1069199	environmental protection
25741	752038	community

An area of 0.95ha of unsurveyed Crown land running from Forest Way to Hilversum Cres to the north of lot 6 DP **807907** in Belrose.

area of closed road to the north of lots **2087** and 1014 DP **752038**

Attachment 3: Objects and Principles of Crown Land Management

Crown Lands Act, 1989 (CL Act)

This Act and its Regulation (2000) are the principal legislation in the management of Crown lands.

The objectives of the CLA, 1989 are "to ensure that Crown land is managed for the benefit of the people of New South Wales and in particular to provide for:

- a) A proper assessment of Crown land,.*
- b) The management of Crown land having regard to the principles of Crown land management contained in this Act,'*
- c) The proper development and conservation of Crown land having regard to those principles;*
- d) The regulation of the conditions under which Crown land is permitted to be occupied, used, sold, leased, licensed, or otherwise dealt with;*
- e) The reservation or dedication of Crown land for public purposes and the management and use of the reserved or dedicated land,' and*
The collection, recording and dissemination of information in relation to Crown land" (NSW Government, p. 5, 1989).

The principles of Crown land management listed within the Crown Lands Act 1989, Clause 1 1 is as follows:

- a) That environmental protection principles be observed in relation to the management and administration of Crown land,*
- b) That the natural resources of Crown land (including water, soil, flora, fauna and scenic quality) be conserved wherever possible;*
- c) That public use and enjoyment of appropriate Crown land be encouraged,.*
- d) That, where appropriate; multiple use of Crown land be encouraged,.*
- e) That, where appropriate, Crown land should be used and managed in such a way that both the land and its resources are sustained in perpetuity,*
That Crown land be occupied, used, sold, leased, licensed or otherwise dealt with in the best interests of the State consistent with the above principles.

SYDNEY METROPOLITAN OFFICE

**Level 12, Macquarie Tower, 10 Valentine Avenue, Parramatta 2150
(PO Box 3935, Parramatta NSW 2124)
Phone: (02) 8836 5300 Fax: (02) 8836 5365**

RESERVATION OF CROWN LAND

Pursuant to section 87 of the Crown Lands Act 1989, the Crown land specified in Column 1 of the Schedule hereunder is reserved as specified opposite thereto in Column 2 of the Schedule.

Tony Kelly MLC
Minister for Lands

SCHEDULE

COLUMN 1	COLUMN 2
Land District: Metropolitan Local Government Area: Warringah Parishes: Manly Cove County: Cumberland Locality: Oxford Falls being the Crown land depicted on the plan of R1012168 held by the Department of Lands Area: About 546 hectares File No: MNO6R23 Note: Existing reservations under the Crown Lands Act are not revoked.	Reserve No. 101 2168 for the public purpose of access and public requirements, rural services, tourism purposes and environmental and heritage conservation